

scan for installation video  
or questions

**wherever there is toilet paper, there will be period products!**

### general requirements:

#### height:

40" to 48" from the floor

#### distance:

7" to 9" in front of the toilet

#### accessibility:

operable with one hand, no tight grasping

#### grab bar:

ensure dispenser does not obstruct grab bar usage  
in ADA/Handicap stalls

### placement options:

**1**

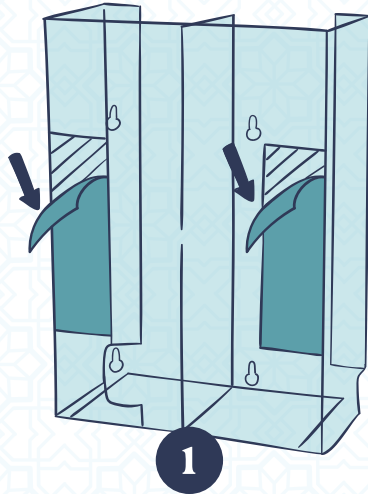
above the toilet paper dispenser or trash receptacle

**2**

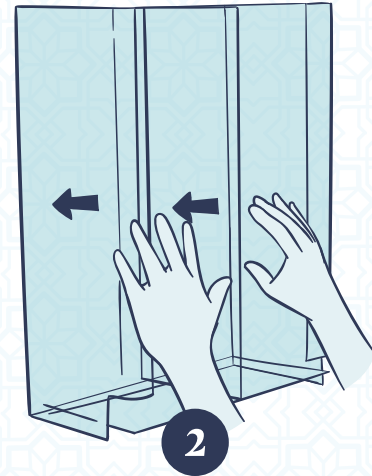
outside vertical grab bar in ADA stall

---

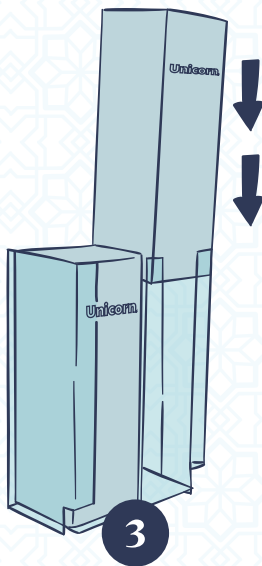
**place a dispenser in  
every stall!**



Remove protective film wrap from exterior of dispenser. Apply 2 pieces of doubled sided tape to the back of acrylic dispenser going vertically.



Install bottom of dispenser 42" from floor adjacent to toilet paper dispenser for ADA compliance. Press acrylic holder firmly against wall for over 30 seconds to secure the tape and remove any air bubbles from tape.



Slide product cartridges in the acrylic dispenser from the top.



Open product cartridges by removing the perforated tab at bottom.